

Bimetal Thermometer Type 03

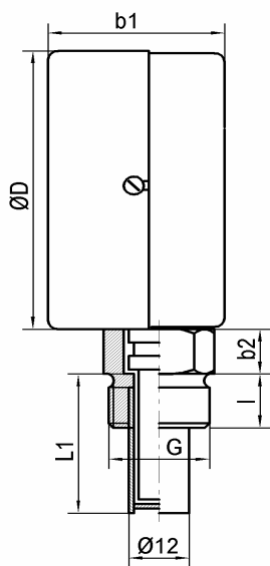


Temperature Element:	Coiled Bimetal
Accuracy:	Class 1 per DIN 16203
Case material:	Steel
Pointer:	Black aluminium
Window:	Instrument glass
Location of stem:	Radial
Stem material:	Cu-alloy
Connection:	Thermowell G ½ , Cu-alloy
Pressure rating of thermowell:	6 bar maximum
Optional extras:	Thread other than G ½, Other connections, Thermowell stainless steel 1.4571

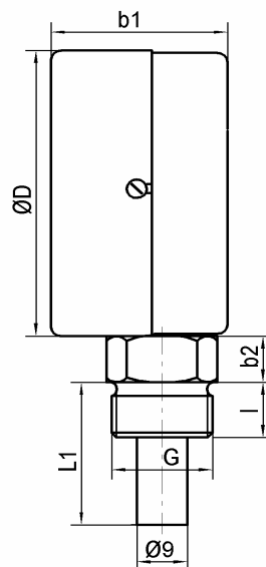
Thermometer Type	Case (mm)	Code	Location of stem	Code	Scale range °C	Code	Stem (mm)	Code	Connection	Code
3	63	3	vertical	6	0 bis 100	100	45	045	Thermowell	
	80	6			0 bis 160	160	50	050	G 1/2	24
	100	7			0 bis 200	200	60	060	G 3/4	25
	160	8			0 bis 250	250	63	063	Solid connection	
					0 bis 300	300	100	100	G 1/2	44
					0 bis 400	400			G 3/4	45
					0 bis 500	500			Union nut	
									G 1/2	64
									G 3/4	65

Dimensions: Standard version

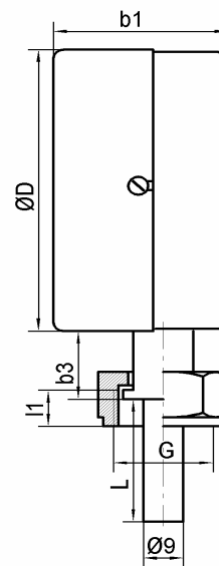
with thermowell



with solid connection



with union nut



Ø D (mm)	G (Zoll)	l (mm)	l1 (mm)	b1 (mm)	b2 (mm)	b3 (mm)	SW (mm)	SW (union nut)
50	G 1/2	14	10	34	10	18	21	24
	G 3/4	16	12	34	12	18	24	32
63	G 1/2	14	10	37	10	18	21	24
	G 3/4	16	12	37	12	18	24	32
80	G 1/2	14	10	37	10	18	21	24
	G 3/4	16	12	37	12	18	24	32
100	G 1/2	14	10	37	10	18	21	24
	G 3/4	16	12	37	12	18	24	32
160	G 1/2	14	10	39	10	18	21	24
	G 3/4	16	12	39	12	18	24	32